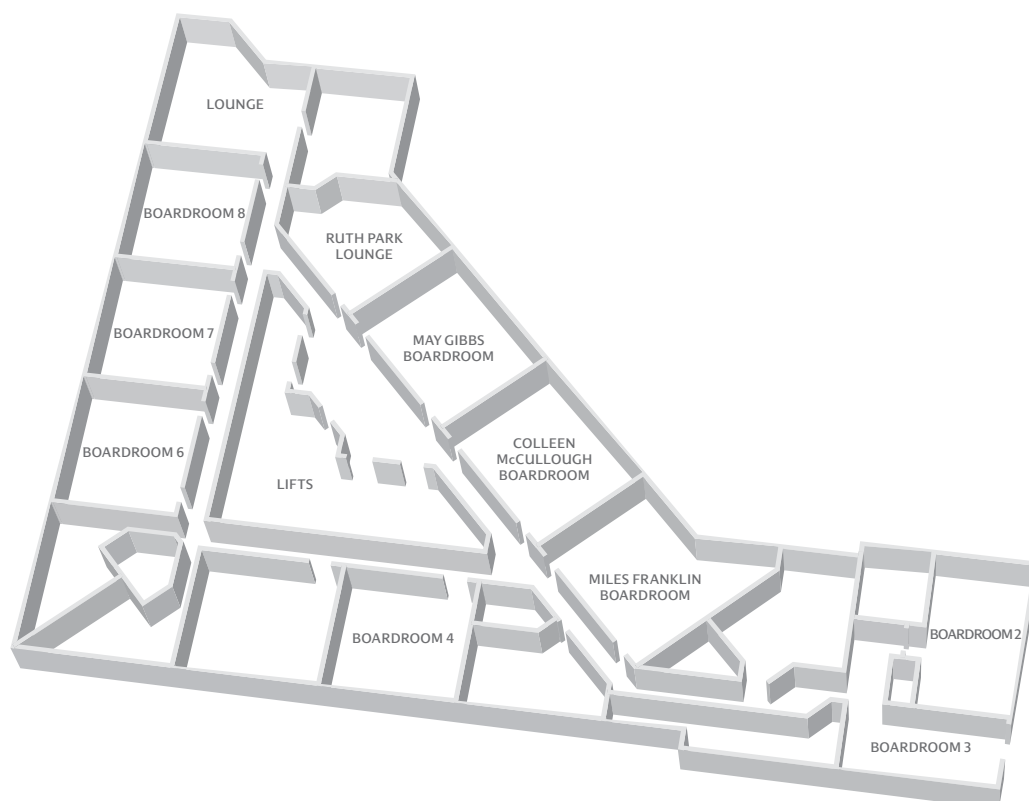


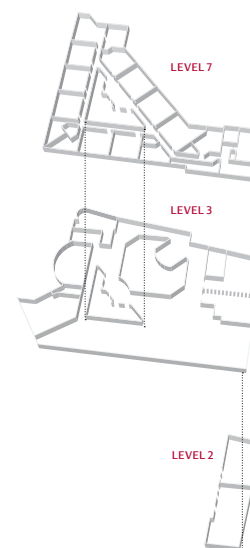
## CONFERENCES AND EVENTS AS IMPRESSIVE AS THE LOCATION

After a multi-million dollar renovation, Sydney Harbour Marriott is a truly luxurious venue situated in one of the world's most stunning locations.

### LEVEL 7



### KEY



MEETING ROOM	DIMENSIONS	AREA	CAPACITY BY FLOOR SET-UP			
	L x W x H metres	Square metres	Banquet	Cabaret	Theatre	Boardroom
LEVEL 7						
Ruth Park Lounge	8 x 4 x 3	32	—	—	—	12
Miles Franklin	8 x 4 x 3	32	—	—	—	12
Colleen McCullough	8 x 4 x 3	32	—	—	—	12
May Gibbs	8 x 4 x 3	32	—	—	—	12
Boardroom 2	8 x 4 x 3	32	20	16	20	16
Boardroom 3	8 x 4 x 3	32	10	8	15	8
Boardroom 6	7 x 4.5 x 2.5	32	—	—	—	12
Boardroom 7	7 x 4.5 x 2.5	32	—	—	—	12
Boardroom 8	7 x 4.5 x 2.5	30	—	—	—	12

## THE EVENT SPACE

- 22 meeting rooms totalling over 1,410 square metres of space
- Dedicated onsite event managers
- A delicious variety of catering and beverage packages
- Private tour and group check in desk for businesses and groups
- Coach and bus parking available in front of the Hotel
- High-speed wireless internet throughout the Hotel

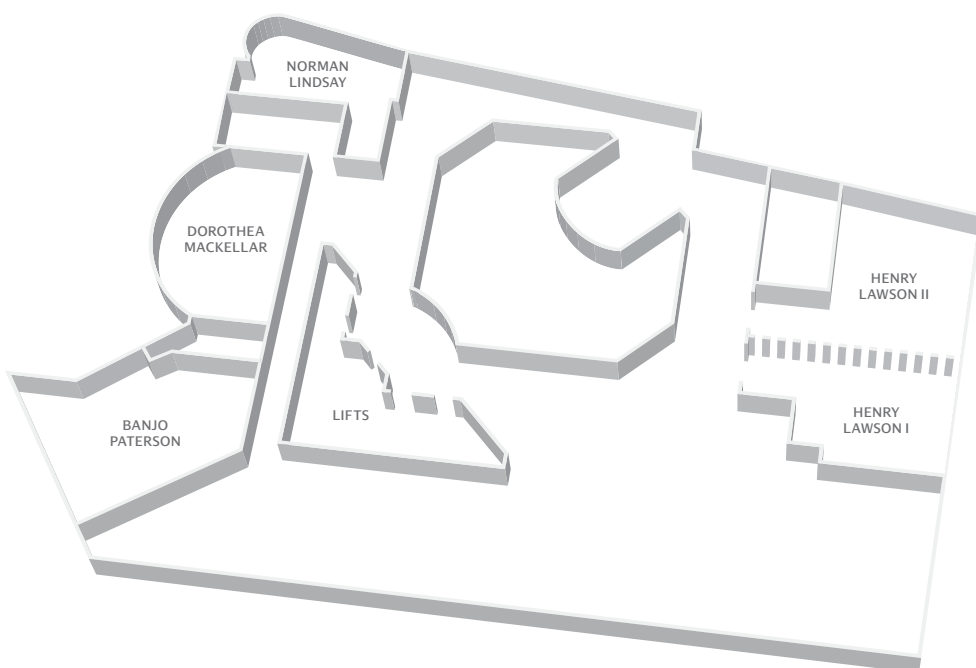
## THE HOTEL FACILITIES

- Restaurant, lounge and bar
- Business centre
- Pool, spa and 24-hour health club
- Executive level and executive lounge
- Early arrivals lounge
- Located in the heart of Circular Quay

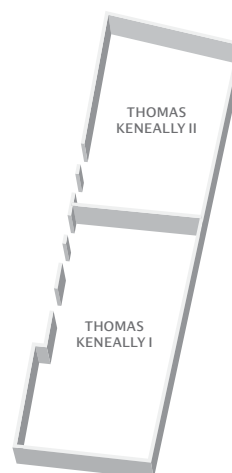
## THE BEDROOMS

- 563 newly refurbished king rooms, twin rooms and suites
- Sydney Harbour and city views
- Contemporary decor with work zones and Revive bedding
- iPod docking stations
- Large 42" flat screen LCD TVs
- High speed broadband

## LEVEL 3



## LEVEL 2



MEETING ROOM	DIMENSIONS	AREA	CAPACITY BY FLOOR SET-UP*						
	L x W x H metres	Square metres	Theatre	Classroom	Boardroom	Ushape	Reception	Banquet	Cabaret
LEVEL 2									
Thomas Keneally I & II	35 x 10 x 3	288	250	159	60	60	250	220	160
Thomas Keneally I	19 x 10 x 3	160	50	30	22	21	100	100	64
Thomas Keneally II	15 x 9 x 3	128	128	66	40	36	120	100	80
LEVEL 3									
Henry Lawson I & II	21 x 10 x 3	231	200	96	60	60	200	160	96
Henry Lawson I	9 x 9 x 3	94	60	30	30	24	40	50	32
Henry Lawson II	12 x 10 x 3	132	114	66	40	36	100	90	56
Dorothea Mackellar	10 x 14 x 3	138	80	48	22	21	80	90	48
Banjo Paterson	12 x 9 x 3	124	70	45	27	27	60	50	32
Norman Lindsay	9 x 5 x 3	38	24	18	15	—	—	20	—

\*Capacities may alter depending on audio visual requirements.